



***Porcelain, High Alumina & Agatewares  
for  
Laboratories, Hospitals  
and Industries***

**CATALOG**

**MEDILAB EXPORTS CONSORTIUM**

17, HSIDC Industrial Estate, Ambala Cantt - 133006 (INDIA)

Tel: 91-9896330136; 91-8607777500

E-Mail: [info@medilabexports.com](mailto:info@medilabexports.com) Website: [www.medilabexports.com](http://www.medilabexports.com)



## CRUCIBLE (Wide Form with Lid)

Crucible Wide Form glazed inside and out except for outside bottom surface and rim.

Catalog Number	Capacity (ml)
P-134	2
P-348	5
P-135	8
P-349	10
P-136	17
P-350	25
P-137	30
P-351	35
P-138	50
P-352	75
P-139	100
P-140	150
P-141	250
P-353	500



## CRUCIBLE (Tall Form with Lid)

Crucible Tall Form glazed inside and out except for outside bottom surface and rim.

Catalog Number	Capacity (ml)
P-116	1.3
P-117	5
P-118	10
P-119	15
P-308	20
P-234	25
P-120	30
P-121	40
P-122	50
P-309	60
P-310	90
P-123	100
P-311	150
P-124	250



## CRUCIBLE (Gooch)

Catalog Number	Capacity (ml)
P-143	15
P-362	17
P-363	20
P-144	30
P-364	35
P-145	50
P-146	140



## **CRUCIBLE ROSE**

Rose, unglazed For High Temperature Applications

<b>Catalog Number</b>	<b>Capacity (ml)</b>
<b>P-151</b>	70



## Crucible Covers

For Crucibles listed below -glazed all over except for rim

Catalog Number	Product Description
P-125	26 mm for: P-117/134/348
P-126	34 mm for: P-118/135/143/362
P-127	38 mm for: P-119/144/147/148/149/150/349/363
P-128	47 mm for: P-120/136/142/145/234/308/350/364
P-129	53 mm for: P-121/137/309/351
P-340	58 mm for: P-122/146
P-130	69 mm for: P-123/138/310/352
P-131	80 mm for: P-139
P-132	93 mm for: P-124/140
P-133	108 mm for: P-141
P-236	155 mm for: P-353



## Casserole

With lip and flat porcelain handle, glazed inside and out except for rim and top of handle.

Catalog No	Capacity (ml)
P-105	25
P-302	35
P-106	65
P-303	85
P-304	120
P-107	140
P-108	200
P-306	300
P-307	400
P-109	500
P-110	760
P-111	1250



## Combustion Boat

Combustion, glazed/unglazed Max Use Temp. 1150 °C

Catalog Number	Length (mm)
P-112	80
P-113	86
P-114	90
P-115	100





## Buchner Funnel with Thick Stem

BUCHNER FUNNEL with thick Stem, fixed perforated plate, glazed inside and out except for rim

Catalog Number	Top Dia (mm)	For Filter Paper Use (mm)
P-420	35	27
P-421	50	40
P-422	60	50
P-423	75	70
P-424	100	90
P-425	125	110
P-426	130	115
P-427	150	130
P-428	200	175
P-429	250	230
P-430	275	240
P-431	300	260
P-432	352	320
P-433	400	360



## Buchner Funnel with thin Stem

Buchner with thin Stem, fixed perforated plate, glazed inside and out except-for rim

Catalog Number	Top Dia (mm)	For Filter Paper Use (mm)
P-183	20	13
P-184	50	40
P-185	65	55
P-186	86	70
P-187	105	90
P-188	127	110
P-189	143	124
P-190	172	150
P-191	210	185
P-192	270	240



## Hirsch Funnel

Hirsch, with fixed perforated plate. Glaze except for rim

Catalog Number	Top Dia (mm)
P-434	30
P-193	42
P-195	50
P-194	55
P-196	78
P-197	95



## Desiccator Plate with Numerous 5mm Holes & Large Hole at Center

Glazed all over except bottom, perforated small holes all over the surface.

Catalog Number	Outer Dia (mm)	Diameter of Holes (mm)
P-159	140	5
P-372	180	5
P-160	190	5
P-373	220	5
P-161	230	5
P-162	230	5
P-374	280	5
P-375	290	5



## Evaporating Basin - (Regular)

Evaporating Dish, Round Form with lip. Glazed inside and outside both sides. For bigger Dishes, glazed inside and partially outside.

Catalog Number	Capacity (ml)	Top Outer Dia (mm)
P-388	4	28
P-389	10	40
P-390	20	50
P-391	40	60
P-392	100	75
P-393	125	85
P-394	175	100
P-395	250	110
P-396	285	120
P-397	400	130
P-398	550	140
P-399	800	150
P-400	1300	175
P-401	1800	200
P-402	3300	250
P-403	4500	300
P-404	7500	350
P-405	11000	350
P-406	14000	400
P-407	16000	450
P-408	18000	500



## Evaporating Dish, Flat Bottom

Evap. Dish, Flat Bottom with lip. High Temp. Export Quality Glazed inside and outside both sides. For bigger Dishes, glazed inside and partially outside.

Catalog Number	Capacity (ml)	Top Outer Dia (mm)
P-381	10	50
P-382	30	60
P-176	35	65
P-177	50	75
P-178	80	85
P-175	100	77
P-179	100	100
P-180	200	120
P-383	300	150
P-384	500	175
P-385	1000	200
P-386	1500	250
P-387	2000	300



## Evaporating Basin – Round Bottom

Evaporating Dish, with lip, shallow form, glazed inside except for rim and partially outside.

Catalog Number	Capacity (ml)	Top Outer Dia (mm)
P-163	35	60
P-164	70	75
P-165	80	80
P-166	120	94
P-167	150	100
P-168	250	115
P-169	385	145
P-376	420	150
P-170	525	162
P-171	765	185
P-377	850	190
P-378	1000	200
P-172	1285	215
P-173	2100	265
P-174	3250	305
P-379	5000	355
P-380	8500	400



## Mortar & Pestle

Mortar: with lip, glazed outside except bottom and unglazed inside.  
 Pestle: unglazed to grinding surface. Pestle oversized for hand comfort in grinding.

Catalog Number	Top ID (mm)	Top OD (mm)	Capacity (ml)
P-438	60	80	60
P-439	75	90	100
P-440	85	105	150
P-441	100	125	275
P-443	125	155	500
P-444	150	180	900
P-445	175	200	1500
P446	200	230	2000
P448	250	285	4200
P-449	300	330	7000
P-450	350	400	-
P-451	400	450	-





## Pestle

Pestle unglazed on grinding surface. Pestle oversized for hand comfort in grinding. (Autoclavable)

Catalog Number	Product Description
P-452	98 mm
P-206	114 mm
P-207	130 mm
P-208	157 mm
P-209	180 mm
P-210	194 mm
P-211	222 mm
P-212	262 mm
P-213	280 mm
P-214	300 mm



## Spotting Plate

Color-reaction or spot plates glazed except for bottom surface.

Catalog No	Length (mm)	Width (mm)	No. of Depressions
P-219	90	29	3
P-462	94	62	6
P-463	112	81	6
P-220	115	88	12
P-223	177	137	30



## Clay Pipe Triangles

With thick or thin wires, pipes unglazed

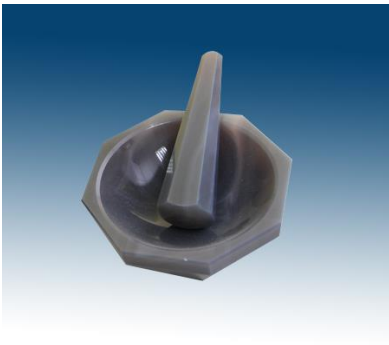
Catalog No.	Size (mm)
P-477	50
P-478	60
P-479	75



## Beehive Shelves

All glazed except bottom and top rim.

Catalog No.	Top Diameter (mm)
P-473	60
P-474	75
P-475	85
P-476	100



## Agate Mortar & Pestle

### Mortar

Catalog No	Top Outer Diameter (mm)	Top Inner Diameter (mm)	Height (mm)
P-900	25	20	19
P-901	38	29	25
P-902	50	38	28
P-903	64	50	31
P-904	76	63	35
P-905	89	76	38
P-906	100	88	41
P-907	114	100	43
P-908	125	114	51
P-909	150	139	65

### Pestle

Catalog No	Length (mm)
P-920	25
P-921	38
P-922	50
P-923	65
P-924	76
P-925	89
P-926	100
P-927	114
P-928	125
P-929	150

## High Alumina Products

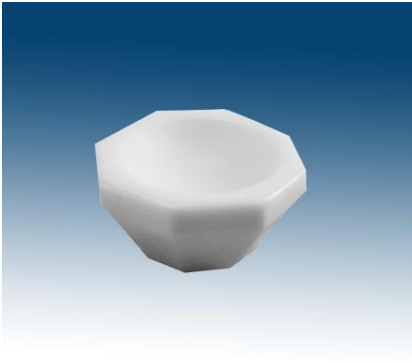
High Alumina wares are made of 99.6% pure aluminum oxide. Highly resistant to chemical attack, this alumina-ceramic ware is especially useful to chemists, metallurgists and other involved in high temperature work demanding contamination-free results.

High Alumina ware is highly refractory, meant for use in reducing and oxidizing atmospheres. It is inert in hydrogen and carbonaceous atmospheres and offers high resistance to Alkalis and other fluxes. Recommended for use with refractory metals such as Molybdenum, Platinum, Rhodium, Tungsten, Tantalum, and Iridium. High-Alumina Labware temperature change rate should not exceed 150 °C/hour.

Other shapes are available on special order. Other information regarding High Alumina ware properties is available upon request.

### PROPERTIES OF HIGH ALUMINA PRODUCTS

PROPERTIES	VALUE / RESULTS
Density	3.922 gm/cc
Water Absorption	NIL
Color	Ivory
Flexural Strength (MOR)	493.4 MPa
Hardness (Moh's Scale)	+9
Hardness (Rockwell Scale)	84
Coefficient of Thermal Expansion (30°C to 1000°C)	8.21
Maximum Use Temperature	1750°C
Chemical Resistance with at 100°C (4 Hrs)	0.0008 %
Chemical Resistance with 10% NaOH at 100°C (4 Hrs)	0.0003 %
Chemical Resistance with (4Hrs)	0.002%
<b>CHEMICAL ANALYSIS</b>	
Al <sub>2</sub> O <sub>3</sub>	99.71 %
SiO <sub>2</sub>	0.04 %
Fe <sub>2</sub> O <sub>3</sub>	0.05 %
TiO <sub>2</sub>	Trace
CaO	0.05 %
MgO	0.06 %
Na <sub>2</sub> O	0.05 %
K <sub>2</sub> O	Trace
L.O.I	0.02 %
TOTAL	99.98 %



## Mortar

99.5% Alumina Mortar glazed outside and unglazed inside.



## Pestle

99.5% Alumina Pestle Unglazed to grinding surface. Pestle oversized for hand comfort in grinding.

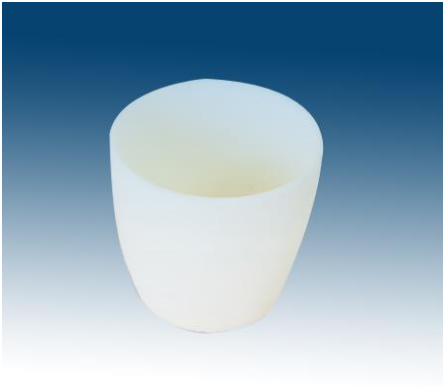
Catalog No.	Capacity (mm)	Top OD (mm)	Top ID (mm)	Height (mm)
P-838	1.5	35	26	18
P-839	7	50	38	26
P-840	15	65	54	31
P-841	30	75	68	37
P-842	80	100	86	47



## Circular Disc

99.7% Alumina Circular Disc, unglazed. Max. use temp. 1750 °C.

Catalog No.	Top Outside Diameter (mm)
P-787	25
P-788	28
P-789	32
P-790	38
P-791	48
P-792	58
P-793	75
P-794	90
P-795	100
P-797	125
P-798	150



## Crucibles - High Form

99.7% Alumina Crucible, High Form, unglazed Max. use temp. 1750 °C.

Catalog No	Capacity (ml)	Upper Diameter (mm)	Height (mm)
P-700	5	23	28
P-701	10	29	33
P-702	20	38	35
P-703	50	48	47
P-704	100	58	62
P-705	250	76	93
P-706	250	82	116
P-707	500	96	132
P-708	750	110	148
P-709	1000	126	162
P-710	1500	130	170
P-711	2000	160	170



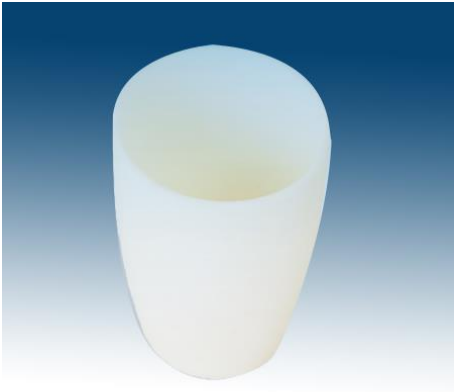


## Crucibles - Cylindrical Form

99.7% Alumina Crucible, Cylindrical Form, unglazed Max. use temp. 1750 °C.

Catalog No	Capacity (ml)	Outer Diameter (mm)
P-724	0.2	10
P-725	1	17
P-726	2	13
P-727	3	17
P-728	5	18
P-729	5	17
P-730	5	28
P-731	10	28
P-732	15	28
P-733	15	32
P-734	20	32
P-735	20	28
P-736	30	35
P-737	40	40
P-738	50	35
P-739	50	41
P-740	60	55
P-741	60	41
P-742	60	56
P-743	80	47
P-744	80	40
P-745	100	52
P-746	150	54
P-747	150	70
P-748	170	57
P-749	225	64
P-750	250	80
P-751	410	90
P-752	450	84

P-753	750	83
P-754	900	85
P-755	1000	100
P-756	1500	105
P-757	2500	127



## Crucibles - Conical Form

99.7% Alumina Crucible, Conical Form, unglazed Max. use temp. 1750 °C.

Catalog No	Capacity (ml)	Top Outside Diameter (mm)
P-758	2	18
P-759	5	35
P-760	20	42
P-761	30	43
P-762	50	53
P-763	100	86
P-764	150	90
P-765	170	61
P-766	200	94
P-767	250	100
P-768	300	87
P-769	500	128
P-770	750	125



## Combustion Boat

99.7% Alumina Combustion Boat, with Tail and hole unglazed. Max. use temp. 1750 °C.

Catalog No	Capacity (ml)
P-799	3
P-800	7
P-801	15
P-802	30
P-803	30
P-804	40
P-805	500



## Rectangular Tray

99.7% Alumina Tray, Rectangular, unglazed. Max. use temp. 1750 °C.

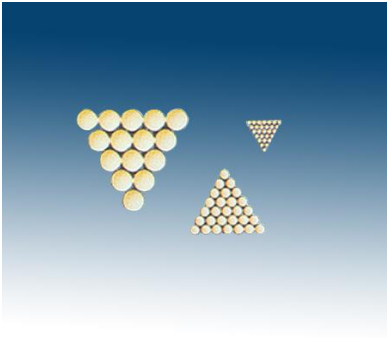
Catalog No	Capacity (mm)
P-817	5
P-820	10
P-821	15
P-822	25
P-823	25
P-824	30
P-825	80
P-826	80
P-827	100
P-828	100
P-829	130
P-830	130
P-831	140
P-832	160
P-833	225
P-834	240
P-835	250
P-836	340
P-837	1000



## Pot/Bead Mill

99.5% Alumina Pot/Bead Mill. Round shape, unglazed.

Catalog No	Loading Capacity (ml)
P-855	200
P-856	500
P-857	1000
P-858	2000
P-859	3000



## Balls/Beads

99.5% Alumina Balls/Beads. Round shape, unglazed.

Catalog No	Loading Capacity (ml)
P-860	1-3
P-861	8-10
P-862	10-15
P-863	15-20
P-864	20-25



## Circular Dish

99.7% Alumina Circular Dish, unglazed. Max. use temp. 1750 °C.

Catalog No	Capacity (ml)
P-777	10
P-778	20
P-779	40
P-780	100
P-781	250
P-782	450
P-783	750